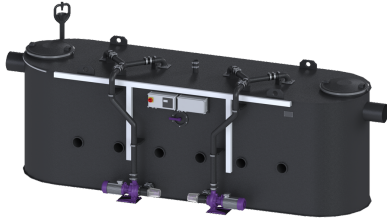


Grease separator EasyClean free NS 30, Auto Mix



Article information

Item no.: 93030-06-DSP

GTIN: 4026092102732

Price group: 60

Advantages

- Clean and odour-free disposal and cleaning
- Customisation possible through control unit
- Low-maintenance operation

Description

The separator for greasy wastewater is suitable for free-standing set-up in frost-protected rooms and comes without metallic components in the tank. The collecting tank made of permanently resistant polymer (PE) is equipped with an integrated sludge trap and has slopes in the tank base for fast and clean disposal. Two odour-tight covers with quick-release closures make easy access possible for cleaning and maintenance work. The innovative Shredder-Mix-System with integrated macerating system is responsible for homogenising and circulating the tank contents. Cleaning is carried out by an exterior pump which can be disconnected from the tank by a shut-off valve. A direct disposal pipe socket is available for odour-neutral manual disposal. The fully automatic program run is controlled by a user-friendly control unit with multi-line display that can be integrated into the building management system through a potential-free contact. Cleaning and disposal can be started remotely using the remote control, which is available as an option. Thanks to the customisable cleaning program with fast-selection function, cleaning can be adapted to the local circumstances as required. Observance of the Drinking Water Hygiene Directive can be guaranteed through the fully automatic rinsing of the drinking water pipes. 20 year polyethylene warranty.

Variant

| | |
|-------------------------------------------|---------------------------|
| Shut-off valve: | yes |
| Disposal variant: | Auto Mix |
| Shredder-Mix-System: | yes |
| Sludge bucket: | yes |
| Nominal size (NS): | 30,00 |
| SonicControl: | no |
| Disposal system: | Disposal connection |
| Refill inlet in accordance with DIN 1988: | yes |
| Type of disposal: | automatic cleaning system |
| Water supply: | 2 solenoid valves 1" |
| Load-bearing capacity (DIN 19901): | F3 |

General characteristics

| | |
|-------------------------|----------------------------------------------------------------------------------------|
| Material: | PE |
| Standard: | EN 1825 |
| Installation situation: | free-standing installation |
| Delivery state: | Installation-ready (electrical components, connection parts must be connected on site) |
| Scope of delivery: | Storz-B coupling R 2 1/2" for disposal vehicle connection |
| ATEX: | no |

Dimensions

| | |
|-------------------------------|---------|
| Net weight: | 700 kg |
| Gross weight: | 700 kg |
| Diameter: | 630 mm |
| Set-up area, length: | 5160 mm |
| Set-up area, width: | 1600 mm |
| Set-up area, height: | 1625 mm |
| Required access area, length: | 5160 mm |
| Required access area, width: | 1280 mm |
| Required access area, height: | 1625 mm |
| Length: | 5160 mm |
| Width: | 1600 mm |
| Height: | 1625 mm |
| Packaging dimension: | length |
| Packaging dimension: | width |
| Packaging dimension: | height |

Tank/drain body

| | |
|---------------------------------------------|-------------------------------------------------------------------------------------------|
| Nominal pressure (PN): | 10 |
| Pressure pipe connection (DN): | 65 |
| Pressure pipe connection (OD): | 75 mm |
| Distance pipe bottom outlet to tank bottom: | 1170 mm |
| Distance pipe bottom inlet to tank bottom: | 1240 mm |
| Outlet nominal size (OD): | 250 mm |
| Outlet nominal size (DN): | 250 mm |
| Inlet nominal size (OD): | 250 mm |
| Inlet nominal size (DN): | 250 mm |
| Connection inlet/outlet sockets: | PE-HD pipes in accordance with DIN 19537, HT pipes in accordance with DIN 19560, PP or AS |

Coverage features

| | |
|------------------|-----------------------|
| Type of cover: | Cover |
| Cover material: | Polymer |
| Colour of cover: | black |
| Locking: | Quick-release closure |
| Tightness: | odour-tight |

Wastewater contents

| | |
|---------------------|--------|
| Separator contents: | 2250 l |
| Total volume: | 5250 l |

| | |
|----------------------------------------------------|--------------------------------------------|
| Contents of sludge trap: | 3000 l |
| Storage quantity of grease: | 1200 l |
| Pumping device | |
| Pump: | SPF 300 KE 2.0 |
| Number of pumps: | 2 |
| Weight, pump: | 44 kg |
| Connection type: | Direct connection |
| Rated current: | 6,2 A |
| Protection class: | I |
| Insulation class: | F |
| Cos phi - power factor: | 0,87 |
| Protection class (pump): | IP 55 |
| Temperature monitoring: | integrated |
| Max. temperature (permanent) of conveyed material: | 40 °C |
| Max. pumping capacity: | 60 m ³ /h |
| Max. pumping height: | 17 m |
| Speed: | 2850 U/min |
| Power P1: | 3,6 kW |
| Power P2: | 3 kW |
| Operating mode: | S2 - 30 min. |
| Type of fuse required (electrical protection): | Fuse protection through control unit 400 V |
| Type of pump connection cable: | H07RN-F 7G 1.5 mm ² |
| Impeller type: | Radial impeller with macerating system |
| Length of mains cable for pump: | 5 m |
| Control | |
| Control unit: | yes |
| Motor protection switch: | yes |
| Type of fuse required (RCD): | 30 mA |
| Protection class control unit: | IP 54 |
| Mains frequency: | 50 Hz |
| Operating voltage: | 400 V |
| Connection type: | Direct connection |
| Potential-free contact: | yes |
| GSM interface: | no |
| USB interface: | no |
| Log book function: | yes |
| Multi-line display: | yes |
| Battery buffering: | no |
| Self-diagnosis system (SDS): | yes |
| Type of fuse required (electrical protection): | Fuse protection through control unit 400 V |