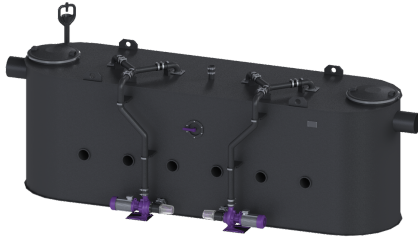


Grease separator EasyClean free NS 30, Mix



Article information

Item no.: 93030-06-DS
 GTIN: 4026092103210
 Price group: 60

Advantages

- Simple control
- Low-maintenance operation
- Odour-reduced disposal with the tank closed

Description

The separator for greasy wastewater is suitable for free-standing set-up in frost-protected rooms and comes without metallic components in the tank. The collecting tank made of permanently resistant polymer (PE) is equipped with an integrated sludge trap and has slopes in the tank base for fast and clean disposal. Two odour-tight covers with quick-release closures make easy access possible for cleaning and maintenance work. The innovative Shredder-Mix-System with integrated macerating system is responsible for homogenising and circulating the tank contents. Cleaning is carried out by an exterior pump which can be disconnected from the tank by a shut-off valve. A direct disposal pipe socket is available for odour-neutral manual disposal. 20 year polyethylene warranty.

Variant

Shut-off valve:	yes
Disposal variant:	Mix
Shredder-Mix-System:	yes
Inspection window:	no
Nominal size (NS):	30
SonicControl:	no
Disposal system:	Disposal connection
Refill inlet in accordance with DIN 1988:	yes
Type of disposal:	manual cleaning system
Water supply:	1 screw-type valve 1"
Load-bearing capacity (DIN 19901):	F3

General characteristics

Material:	PE
Standard:	EN 1825
Installation situation:	free-standing installation
Delivery state:	Installation-ready (electrical components, connection parts must be connected on site)

Scope of delivery:	Storz-B coupling R 2 1/2" for disposal vehicle connection
Dimensions	
Net weight:	670 kg
Gross weight:	670 kg
Diameter:	630 mm
Set-up area, length:	5160 mm
Set-up area, width:	1600 mm
Set-up area, height:	1625 mm
Required access area, length:	5160 mm
Required access area, width:	1280 mm
Required access area, height:	1625 mm
Length:	5160 mm
Width:	1600 mm
Height:	1625 mm
Packaging dimension:	length
Packaging dimension:	width
Packaging dimension:	height
Tank/drain body	
Nominal pressure (PN):	10
Pressure pipe connection (DN):	65
Pressure pipe connection (OD):	75 mm
Distance pipe bottom outlet to tank bottom:	1170 mm
Distance pipe bottom inlet to tank bottom:	1240 mm
Outlet nominal size (OD):	250 mm
Outlet nominal size (DN):	250 mm
Inlet nominal size (OD):	250 mm
Inlet nominal size (DN):	250 mm
Connection inlet/outlet sockets:	PE-HD pipes in accordance with DIN 19537, HT pipes in accordance with DIN 19560, PP or AS
Coverage features	
Type of cover:	Cover
Cover material:	Polymer
Colour of cover:	black
Locking:	Quick-release closure
Tightness:	odour-tight
Wastewater contents	
Separator contents:	2250 l
Total volume:	5250 l
Contents of sludge trap:	3000 l
Storage quantity of grease:	1200 l
Pumping device	
Pump:	SPF 300 KE 2.0
Number of pumps:	2
Weight, pump:	44 kg

Connection type:	Direct connection
Protection class:	I
Insulation class:	F
Cos phi - power factor:	0,87
Protection class (pump):	IP 55
Temperature monitoring:	integrated
Max. temperature (permanent) of conveyed material:	40 °C
Max. pumping capacity:	60 m ³ /h
Max. pumping height:	17 m
Speed:	2850 U/min
Power P1:	3,6 kW
Power P2:	3 kW
Operating mode:	S2 - 30 min.
Type of pump connection cable:	H07RN-F 7G 1.5 mm ²
Impeller type:	Radial impeller with macerating system
Length of mains cable for pump:	5 m
Rated current:	6,2 A
Control	
Control unit:	yes
Type of fuse required (RCD):	30 mA
Mains frequency:	50 Hz
Operating voltage:	400 V
Connection type:	Direct connection