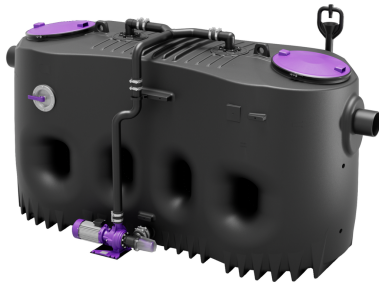


Grease separator EasyClean free NS 20, Mix



Article information

Item no.: 93020.01/DS

GTIN:

Price group: 60

Advantages

- Simple control
- Low-maintenance operation
- Odour-reduced disposal with the tank closed

Description

The separator for greasy wastewater is suitable for free-standing set-up in frost-protected rooms and comes without metallic components in the tank. The collecting tank made of permanently resistant polymer (PE) is equipped with an integrated sludge trap and has slopes in the tank base for fast and clean disposal. Two odour-tight covers with quick-release closures make easy access possible for cleaning and maintenance work. The innovative Shredder-Mix-System with integrated macerating system is responsible for homogenising and circulating the tank contents. Cleaning is carried out by an exterior pump which can be disconnected from the tank by a shut-off valve. A direct disposal pipe socket is available for odour-neutral manual disposal. 20 year polyethylene warranty.

Variant

| | |
|---|------------------------|
| Shut-off valve: | yes |
| Disposal variant: | Mix |
| Shredder-Mix-System: | yes |
| Sludge bucket: | no |
| Nominal size (NS): | 20,00 |
| SonicControl: | no |
| Disposal system: | Disposal connection |
| Refill inlet in accordance with DIN 1988: | yes |
| Type of disposal: | manual cleaning system |
| Water supply: | 1 screw-type valve 1" |
| Load-bearing capacity (DIN 19901): | F3 |

General characteristics

| | |
|-------------------------|--|
| Material: | PE |
| Standard: | EN 1825 |
| Installation situation: | free-standing installation |
| Delivery state: | Installation-ready (electrical components, connection parts must be connected on site) |

| | |
|--|---|
| Scope of delivery: | Storz-B coupling R 2 1/2" for disposal vehicle connection |
| Dimensions | |
| Diameter: | 630 mm |
| Set-up area, length: | 4510 mm |
| Set-up area, width: | 1620 mm |
| Set-up area, height: | 1555 mm |
| Required access area, length: | 4250 mm |
| Required access area, width: | 1350 mm |
| Required access area, height: | 1525 mm |
| Tank/drain body | |
| Nominal pressure (PN): | 10 |
| Pressure pipe connection (DN): | 65 |
| Pressure pipe connection (OD): | 75 mm |
| Distance pipe bottom outlet to tank bottom: | 1030 mm |
| Distance pipe bottom inlet to tank bottom: | 1100 mm |
| Outlet nominal size (OD): | 200 mm |
| Outlet nominal size (DN): | 200 mm |
| Inlet nominal size (OD): | 200 mm |
| Inlet nominal size (DN): | 200 mm |
| Connection inlet/outlet sockets: | PE-HD pipes in accordance with DIN 19537, HT pipes in accordance with DIN 19560, PP or AS |
| Coverage features | |
| Type of cover: | Cover |
| Cover material: | Polymer |
| Colour of cover: | black |
| Locking: | Quick-release closure |
| Tightness: | odour-tight |
| Wastewater contents | |
| Separator contents: | 1370 l |
| Total volume: | 3370 l |
| Contents of sludge trap: | 2000 l |
| Storage quantity of grease: | 800 l |
| Pumping device | |
| Pump: | SPF 300 KE 2.0 |
| Number of pumps: | 2 |
| Weight, pump: | 44 kg |
| Connection type: | Direct connection |
| Protection class: | I |
| Insulation class: | F |
| Cos phi - power factor: | 0,87 |
| Protection class (pump): | IP 55 |
| Temperature monitoring: | integrated |
| Max. temperature (permanent) of conveyed material: | 40 °C |

| | |
|---------------------------------|--|
| Max. pumping capacity: | 60 m ³ /h |
| Max. pumping height: | 17 m |
| Speed: | 2850 U/min |
| Power P1: | 3,6 kW |
| Power P2: | 3 kW |
| Operating mode: | S2 - 30 min. |
| Type of pump connection cable: | H07RN-F 7G 1.5 mm ² |
| Impeller type: | Radial impeller with macerating system |
| Length of mains cable for pump: | 5 m |
| Rated current: | 6,2 A |
| Control | |
| Control unit: | yes |
| Type of fuse required (RCD): | 30 mA |
| Mains frequency: | 50 Hz |
| Operating voltage: | 400 V |
| Connection type: | Direct connection |