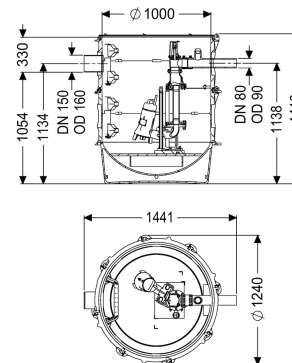


## Pumping station Aquapump XL Tronic, STZ 1400-S1



### Article information

Item no.: 8743033  
 GTIN: 4026092078983  
 Price group: 60

### Advantages

- Maximum safety
- Flexible installation
- Also handles large quantities of wastewater

### Description

The pumping station is equipped with one or two submersible pumps and a backflow preventer. The collection tank made of permanently resistant polymer (PE) has an open pump tank with universal connection options. Quick-release closures enable the integrated components to be removed easily. The KESSEL modular system provides different engineering chamber options as accessories for the further layout. Stainless steel pump removal chains available as accessory for each installation depth - Article number:

680528 = Length 2 m 680529 = Length 3 m  
 680530 = Length 4 m 680531 = Length 5 m

#### Variant

Type of system:  
 Shut-off valve:  
 Passage seal for conduit pipe (DN):  
 Access steps:  
 Passage seal for ventilation pipe (DN):  
 Installation:  
 Pump control:  
 Backflow preventer:  
 Pressure pipe connection:

Single unit  
 Shut-off valve made of polymer  
 100  
 yes  
 100  
 Wet installation  
 Control unit  
 integrated  
 horizontal

#### General characteristics

Colour:	black
Standard:	EN 12050-2 as well as EN 12050-1 (without ATEX requirements)
Type of wastewater:	for wastewater with and without sewage
Delivery state:	Pre-mounted for final assembly on site (pumps and sensor system must be fitted on site and control unit must be connected)
System type:	Tronic
Dimensions	
Net weight:	153 kg
Gross weight:	177 kg
Groundwater resistant from lower edge of base section:	3000 mm
Length:	1300 mm
Width:	1300 mm
Height:	1416 mm
Packaging dimension:	length
Packaging dimension:	width
Packaging dimension:	height
Tank/drain body	
Pressure pipe connection (DN):	80
Pressure pipe connection (OD):	90 mm
Inlet nominal size (OD):	160 mm
Inlet nominal size (DN):	150 mm
Number of inlets:	1
Clear width of tank (LW):	1000 mm
Pumping volume:	350 l
Pumping device	
Pump:	GTF 1400
Number of pumps:	1
Weight, pump:	22 kg
Connection type:	Direct connection
Protection class:	I
Insulation class:	H
Cos phi - power factor:	0,99
Protection class (pump):	IP 68 (20m)
Temperature monitoring:	integrated
Max. temperature (permanent) of conveyed material:	40 °C
Max. pumping capacity:	31 m³/h
Max. pumping height:	10,5 m
Speed:	2900 U/min
Power P1:	1,5 kW
Power P2:	1,1 kW
Operating mode:	S1
Type of pump connection cable:	H07RN-F 4G 1.5 mm² mm²
Impeller type:	Multi-vane impeller

Length of mains cable for pump:	10 m
Rated current:	6,5 A
Control	
Control unit:	Comfort
Control unit function:	With alarm message
Motor protection switch:	yes
Alarm sensor:	Level sensor
Level measurement instrument:	Level sensor
Type of level measurement:	hydrostatic
Protection class control unit:	IP 54
Mains frequency:	50 Hz
Operating voltage:	230 V
Connection type:	Direct connection
Length of mains cable for control unit:	1,4 m
Potential-free contact:	optional
GSM interface:	yes
USB interface:	yes
Log book function:	yes
Multi-line display:	yes
Battery buffering:	yes
Self-diagnosis system (SDS):	yes
Warning equipment version:	acoustic and optical signal