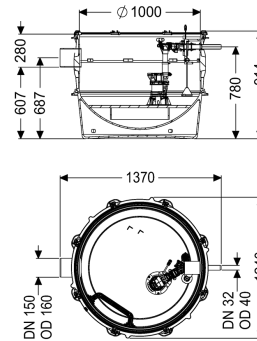
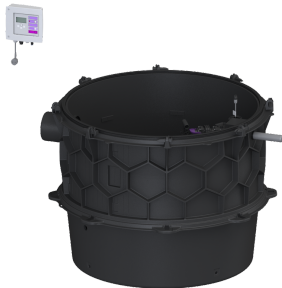


## Pumping station Aquapump XL Mono, GTF 600-S1, Subm. pressure switch



### Article information

Item no.: 8743005  
 GTIN: 4026092075623  
 Price group: 60

### Advantages

- Maximum safety
- Flexible installation
- Also handles large quantities of wastewater

### Description

The pumping station without sewage wastewater is equipped with one or two submersible pumps and a backflow preventer. The collection tank made of permanently resistant polymer (PE) has an open pump tank with universal connection options. Quick-release closures enable the integrated components to be removed easily. The KESSEL modular system provides different engineering chamber options as accessories for the further layout.

#### Variant

|   |                                      |
|---|--------------------------------------|
| Note on installation depth:             | in combination with a chamber module |
| Type of system:                         | Single unit                          |
| Shut-off valve:                         | without shut-off valve               |
| Passage seal for conduit pipe (DN):     | 100                                  |
| Access steps:                           | yes                                  |
| Passage seal for ventilation pipe (DN): | 100                                  |
| Installation:                           | Wet installation                     |
| Pump control:                           | Control unit                         |
| Backflow preventer:                     | integrated                           |
| Pressure pipe connection:               | horizontal                           |

#### General characteristics

|                     |                |
|---------------------|----------------|
| Colour:             | black          |
| Standard:           | EN 12050-2     |
| Type of wastewater: | without sewage |

|  |  |
|--|--|
| Installation situation:                                | underground installation   |
| Delivery state:  | Pre-mounted for final assembly on site (pumps and sensor system must be fitted on site and control unit must be connected) |
| System type:   | Tronic   |
| <b>Dimensions</b>                                      |  |
| Net weight:  | 92 kg  |
| Gross weight:  | 107 kg   |
| Groundwater resistant from lower edge of base section: | 3000 mm  |
| Length:  | 1330 mm  |
| Width:   | 1240 mm  |
| Height:  | 914 mm   |
| Packaging dimension:                                   | length   |
| Packaging dimension:                                   | width  |
| Packaging dimension:                                   | height   |
| <b>Tank/drain body</b>                                 |  |
| Pressure pipe connection (DN):                         | 32   |
| Pressure pipe connection (OD):                         | 40 mm  |
| Distance from centre of outlet pipe to tank bottom:    | 780 mm   |
| Distance pipe bottom inlet to tank bottom:             | 607 mm   |
| Distance from centre of inlet pipe to tank bottom:     | 687 mm   |
| Distance from inlet pipe invert to top of tank:        | 281 mm   |
| Inlet max. scoring (DN):                               | 150 mm   |
| Inlet nominal size (OD):                               | 160 mm   |
| Inlet nominal size (DN):                               | 150 mm   |
| Number of inlets:                                      | 1  |
| Clear width of tank (LW):                              | 1000 mm  |
| Pumping volume:  | 90 l   |
| <b>Pumping device</b>                                  |  |
| Pump:  | GTF 600  |
| Number of pumps:                                       | 1  |
| Weight, pump:  | 6 kg   |
| Connection type:                                       | coded plug   |
| Rated current:   | 2,7 A  |
| Protection class:                                      | I  |
| Insulation class:                                      | F  |
| Cos phi - power factor:                                | 0,91   |
| Protection class (pump):                               | IP 68 (3m)   |
| Temperature monitoring:                                | integrated   |
| Max. temperature (permanent) of conveyed material:     | 40 °C  |
| Max. pumping capacity:                                 | 12 m <sup>3</sup> /h   |
| Max. pumping height:                                   | 8 m  |
| Speed:   | 2800 U/min   |

|  |                                |
|--|--------------------------------|
| Power P1:                                      | 0,6 kW                         |
| Power P2:                                      | 0,36 kW                        |
| Operating mode:                                | S1                             |
| Type of fuse required (electrical protection): | C 16 A                         |
| Type of pump connection cable:                 | H07RN-F 3G 1.5 mm <sup>2</sup> |
| Impeller type:                                 | Multi-vane impeller            |
| Length of mains cable for pump:                | 10 m                           |
| <br>   |                                |
| Control  |                                |
| Control unit:                                  | Comfort                        |
| Alarm sensor:                                  | optical probe                  |
| Level measurement instrument:                  | Submersible pressure switch    |
| Type of level measurement:                     | pneumatic                      |
| Protection class control unit:                 | IP 54                          |
| Mains frequency:                               | 50 Hz                          |
| Operating voltage:                             | 230 V                          |
| Connection type:                               | coded plug                     |
| Length of mains cable for control unit:        | 1,4 m                          |
| Potential-free contact:                        | optional                       |
| GSM interface:                                 | yes                            |
| USB interface:                                 | yes                            |
| Log book function:                             | yes                            |
| Multi-line display:                            | yes                            |
| Battery buffering:                             | yes                            |
| Self-diagnosis system (SDS):                   | yes                            |
| Type of fuse required (electrical protection): | C 16 A                         |