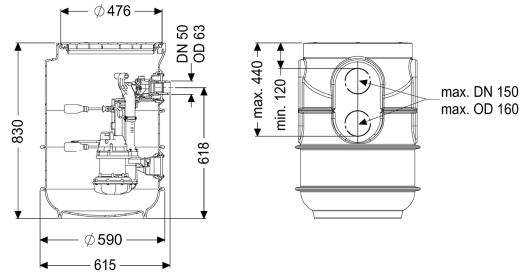


Pumping station Aquapump Small Tronic, Basic, GTF 1250



Article information

Item no.: 829851
 GTIN: 4026092092996
 Price group: 20

Advantages

- Including backflow preventer for the pressure pipe
- Including openings for inlet, ventilation and cable duct
- Easy tool-free maintenance

Description

The pumping station without sewage wastewater is suitable for underground installation and is equipped with a backflow preventer for the pressure pipe. The PE tank is resistant to domestic wastewater and includes a pedestrian class polymer cover plate. The pump with multi-vane impeller ensures maximum operating reliability. The components are pre-assembled for final assembly on site. Including openings for inlet. - tank made of PE, resistant to domestic wastewater - with a pedestrian class cover plate made of polymer - including backflow preventer for the pressure pipe - including openings for inlet, ventilation and cable duct - pump/s with multi-vane impeller for maximum operating reliability

Variant

| | |
|---------------------|------------------|
| Type of system: | Single unit |
| Installation: | Wet installation |
| Pump control: | Control unit |
| Backflow preventer: | integrated |

General characteristics

| | |
|-------------------------|--------------------------|
| Colour: | black |
| Standard: | EN 12050-2 |
| Type of wastewater: | without sewage |
| Installation situation: | underground installation |

| | |
|--|--|
| Delivery state: | Pre-mounted for final assembly on site (pumps and sensor system must be fitted on site and control unit must be connected) |
| System type: | Tronic |
| Dimensions | |
| Net weight: | 22 kg |
| Gross weight: | 32 kg |
| Installation depth: | 0 - 830 mm |
| Length: | 590 mm |
| Width: | 590 mm |
| Height: | 830 mm |
| Packaging dimension: | length |
| Packaging dimension: | width |
| Packaging dimension: | height |
| Tank/drain body | |
| Pressure pipe connection (DN): | 50 |
| Pressure pipe connection (OD): | 63 mm |
| Inlet max. scoring (DN): | 100 mm |
| Pumping volume: | 60 l |
| Coverage features | |
| Type of cover: | Round cover plate |
| Colour of cover: | black |
| Width of cover: | 600 mm |
| Length of cover: | 615 mm |
| Locking: | lockable |
| Load class: | up to 300 kg |
| Pumping device | |
| Pump: | GTF 1250 |
| Number of pumps: | 1 |
| Weight, pump: | 10 kg |
| Connection type: | Schuko (earthed contact) 2-pin |
| Rated current: | 5,4 A |
| Protection class: | I |
| Insulation class: | F |
| Protection class (pump): | IP 68 (3mWS) |
| Temperature monitoring: | integrated |
| Max. temperature (permanent) of conveyed material: | 40 °C |
| Max. pumping capacity: | 20 m ³ /h |
| Max. pumping height: | 11 m |
| Speed: | 2700 U/min |
| Power P1: | 1,3 kW |
| Power P2: | 0,8 kW |
| Operating mode: | S1 |
| Type of fuse required (electrical protection): | C 16 A |
| Type of pump connection cable: | H07RN-F 3G 1.5 mm ² |

| | |
|--|--------------------------------|
| Impeller type: | Multi-vane impeller |
| Free passage: | 30 mm |
| Switching level, float switch OFF: | 160 |
| Switching level, float switch ON: | 260 |
| Length of mains cable for pump: | 10 m |
| | |
| Control | |
| Control unit: | Basic |
| Control unit function: | With alarm message |
| Motor protection switch: | yes |
| Level measurement instrument: | Float switch |
| Type of level measurement: | mechanical |
| Protection class control unit: | IP 54 |
| Mains frequency: | 50 Hz |
| Operating voltage: | 230 V |
| Connection type: | Schuko (earthed contact) 2-pin |
| Length of mains cable for control unit: | 1,45 m |
| Potential-free contact: | optional |
| Battery buffering: | yes |
| Self-diagnosis system (SDS): | yes |
| Warning equipment version: | acoustic and optical signal |
| Type of fuse required (electrical protection): | C 16 A |