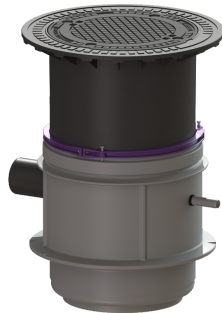


Pumping station Aquapump Medium Duo, STZ 1000, 800-1250 mm, B



Article information

Item no.: 826711B

GTIN: 4026092052167

Price group: 60

Advantages

- height-adjustable upper section
- Preconfigured in the factory
- LW 600 chamber system suitable for underground installation

Description

The pumping station with sewage wastewater is equipped with one or two submersible pumps and a backflow preventer. The collection tank is an LW 600 chamber system made of permanently resistant polymer (PE-LLD) with open pump tank and universal connection options. Quick-release closures enable the integrated components to be removed easily.

Variant

Type of system:	duo pump
Passage seal for conduit pipe (DN):	100
Access steps:	no
Passage seal for ventilation pipe (DN):	100
Installation:	Wet installation
Pump control:	Control unit
Backflow preventer:	integrated
Pressure pipe connection:	horizontal
Chamber system:	LW 600

General characteristics

Standard:	EN 12050-2, EN 12050-2 as well as EN 12050-1 (without ATEX requirements)
Type of wastewater:	for wastewater with or without sewage (in installation situations without ATEX requirements)
Installation situation:	underground installation
System type:	Duo

Dimensions

Net weight:	127 kg
Gross weight:	139 kg

Groundwater resistant from lower edge of base section:	2500 mm
Diameter:	809 mm
Clear width (LW):	600 mm
Installation depth:	800 - 1250 mm
Length:	1000 mm
Width:	806 mm
Packaging dimension:	length
Packaging dimension:	width
Packaging dimension:	height
Tank/drain body	
Pressure pipe connection (DN):	32
Pressure pipe connection (OD):	40 mm
Connection conduit pipe (DN):	100
Venting connection (DN):	100
Distance from centre of outlet pipe to tank bottom:	482 mm
Distance pipe bottom inlet to tank bottom:	400 mm
Distance from centre of inlet pipe to tank bottom:	475 mm
Inlet nominal size (DN):	150 mm
Number of inlets:	1
Clear width of tank (LW):	600 mm
Pumping volume:	30 l
Coverage features	
Type of cover:	Round cover plate
Load class:	B 125 (EN 124)
Pumping device	
Pump:	STZ 1000
Number of pumps:	2
Weight, pump:	10 kg
Connection type:	Schuko (earthed contact) 2-pin
Operating voltage:	230 V
Protection class:	I
Insulation class:	F
Protection class (pump):	IP 68 (3m)
Max. temperature (permanent) of conveyed material:	40 °C
Max. pumping capacity:	11,5 m³/h
Max. pumping height:	10 m
Speed:	2800 U/min
Power P1:	1,2 kW
Power P2:	0,69 kW
Operating mode:	S3 - 50 %
Impeller type:	Macerator
Length of mains cable for pump:	10 m
Rated current:	5,2 A

Control	
Control unit:	Comfort
Control unit function:	With alarm message
Motor protection switch:	yes
Alarm sensor:	optical probe
Level measurement instrument:	Submersible pressure switch
Type of level measurement:	pneumatic
Protection class control unit:	IP 54
Mains frequency:	50 Hz
Operating voltage:	230 V
Connection type:	Schuko (earthed contact) 2-pin
Potential-free contact:	yes
GSM interface:	yes
USB interface:	yes
Log book function:	yes
Multi-line display:	yes
Battery buffering:	yes
Self-diagnosis system (SDS):	yes
Warning equipment version:	acoustic and optical signal
Type of fuse required (electrical protection):	C 16 A