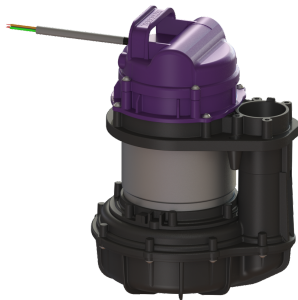


Replacement pump STF 1300 230 V, Tronic



Article information

Item no.: 680820
GTIN: 4026092085288
Price group: 90

Description

Replacement pump STF 1300 230 V, Tronic

General characteristics

Cable length: 10 m

Dimensions

Net weight: 3,6 kg
Gross weight: 11,05 kg
Packaging dimension: length
Packaging dimension: width
Packaging dimension: height

Pumping device

Pump: STF 1300
Number of pumps: 1
Connection type: coded plug
Operating voltage: 230 V
Mains frequency: 50 Hz
Rated current: 6 A
Protection class (pump): IP 68 (3m)
Temperature monitoring: integrated
Max. temperature (permanent) of conveyed material: 35 °C
Max. pumping height: 10 m
Speed: 2650 U/min
Power P1: 1,3 kW
Power P2: 0,8 kW
Operating mode: S3 - 50 %
Type of fuse required (electrical protection): C 16 A
Type of pump connection cable: H07RN-F 3G 1.5 mm²
Impeller type: Multi-vane impeller
Length of mains cable for pump: 10 m

Control

Connection type:

coded plug

Type of fuse required (electrical protection):

C 16 A