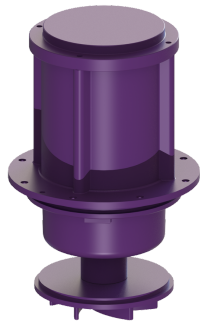


## Pump drive SPF 5500 E 400 V, S3, 5 m cable



### Article information

Item no.: 680727  
GTIN: 4026092095508  
Price group: 90

### Description

Pump drive with multi-vane impeller for faecal wastewater

#### General characteristics

ATEX: no

#### Dimensions

Net weight: 38 kg

Gross weight: 40 kg

Packaging dimension: length

Packaging dimension: width

Packaging dimension: height

#### Pumping device

Pump: SPF 5500 E

Connection type: Direct connection

Rated current: 9,1 A

Protection class: I

Protection class (pump): IP 68 (3m/48h)

Max. temperature (permanent) of conveyed material: 40 °C

Max. pumping height: 27 m

Speed: 2840 U/min

Power P1: 5,6 kW

Power P2: 4,7 kW

Type of pump connection cable: H07RN-F 7G 1.5 mm<sup>2</sup>

Length of mains cable for pump: 5 m

#### Control

Mains frequency: 50 Hz

Operating voltage: 400 V

Connection type: Direct connection

Rated current: 9,1 A