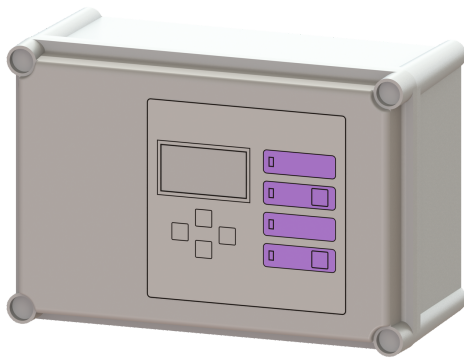


## Comfort control unit Mono, 400 V, 6.3-10.0 A



### Article information

Item no.: 680618  
 GTIN: 4026092078624  
 Price group: 90

### Description

Control unit, Comfort 400 V Mono 6.3-10 A

#### General characteristics

System type: Mono

#### Dimensions

Net weight: 2,63 kg

Gross weight: 2,98 kg

Packaging dimension: length

Packaging dimension: width

Packaging dimension: height

#### Pumping device

Connection type: Direct connection

#### Control

Control unit: Comfort

Motor protection switch: yes

Protection class control unit: IP 54

Connection type: Direct connection

Potential-free contact: yes

USB interface: no

Log book function: yes

Multi-line display: yes

Battery buffering: yes

Self-diagnosis system (SDS): yes