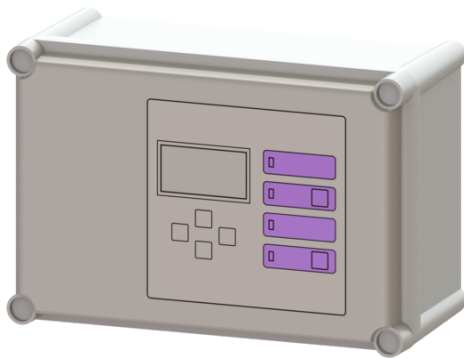


ContrUnit Comfort Mono 400V 4,0-6,3A, AX



Article information

Item no.: 680616
 GTIN: 4026092078600
 Price group: 90

Description

General characteristics

System type: Mono

Dimensions

Net weight: 2,63 kg

Gross weight: 2,98 kg

Packaging dimension: length

Packaging dimension: width

Packaging dimension: height

Pumping device

Connection type: Direct connection

Control

Control unit: Comfort

Motor protection switch: yes

Protection class control unit: IP 54

Connection type: Direct connection

Potential-free contact: yes

USB interface: no

Log book function: yes

Multi-line display: yes

Self-diagnosis system (SDS): yes

Type of fuse required (electrical protection): C 16 A