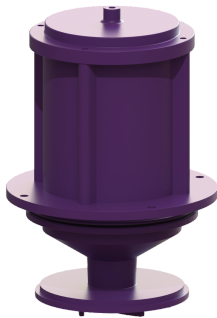


## Pump drive SPF 3000 400 V, S1, 10 m cable



### Article information

Item no.: 680532  
GTIN: 4026092074930  
Price group: 90

### Description

Pump drive type SPF 3000-S1 for Aqualift F XL pumping station, dry installation

#### General characteristics

ATEX: no

#### Dimensions

Net weight: 27,5 kg  
Gross weight: 30,3 kg  
Packaging dimension: length  
Packaging dimension: width  
Packaging dimension: height

#### Pumping device

Pump: SPF 3000  
Connection type: Direct connection  
Operating voltage: 400 V  
Mains frequency: 50 Hz  
Rated current: 5,4 A  
Protection class: I  
Insulation class: F  
Cos phi - power factor: 0,89  
Protection class (pump): IP 68  
Max. temperature (permanent) of conveyed material: 40 °C  
Max. pumping height: 16 m  
Speed: 2845 U/min  
Power P1: 3,2 kW  
Power P2: 2,7 kW  
Operating mode: S1  
Type of fuse required (electrical protection): Fuse protection through control unit 400 V  
Type of pump connection cable: H07RN-F 7G 1.5 mm<sup>2</sup>

#### Control

Connection type:

Direct connection

Type of fuse required (electrical protection):

Fuse protection through control unit 400 V