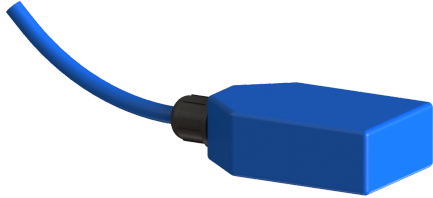


Float switch Type EHZ 6.3, 30 m cable, AX



Article information

Item no.: 680029
GTIN: 4026092062227
Price group: 90

Description

float switch for pumping stations in the Comfort chamber LW 1000

General characteristics

Colour:	blue
Cable length:	30 m

Dimensions

Net weight:	3,14 kg
Gross weight:	3,3 kg
Packaging dimension:	length
Packaging dimension:	width
Packaging dimension:	height