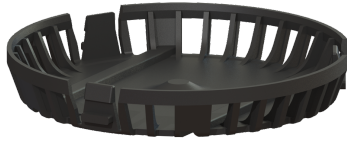


Intake cage with push-fit fastener, for KTP 300



Article information

Item no.: 680013
GTIN: 4026092062067
Price group: 90

Description

Intake cage as anti-dirt protection for submersible pumps

General characteristics

Colour:	black
Material:	Polymer
ATEX:	no

Dimensions

Net weight:	0,06 kg
Gross weight:	0,1 kg
Packaging dimension:	length
Packaging dimension:	width
Packaging dimension:	height