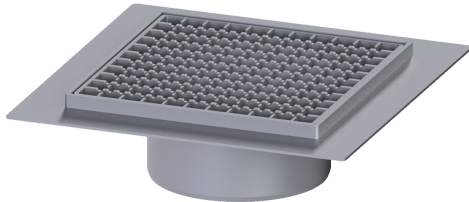


Ferrofix upper section gl. flange Sys200 slot grat, 304SST, 300 x 300 mm



Article information

Item no.: 57415-KF
 GTIN: 4026092095287
 Price group: 70

Advantages

- Made of a particularly hygienic and mechanically highly resistant stainless steel
- Multiple combinations with suitable drain bodies

Description

Used in combination with a drain body of the KESSEL modular system 200, the Ferrofix stainless steel upper section with glued flange is suitable for indoor point drainage.

Variant

System:	200
Waterproofing layer on the upper section:	Adhesive flange (suitable for moisture barriers)
Water exposure class in accordance to DIN 18534-1 (up to and including):	W3-I

Dimensions

Net weight:	4,2 kg
Gross weight:	4,65 kg
Type of height adjustability:	vertically adjustable upper section
Length:	400 mm
Width:	400 mm
Height:	112 mm
Packaging dimension:	length
Packaging dimension:	width
Packaging dimension:	height

Coverage features

Type of cover:	Slotted cover
Cover material:	Stainless steel 14301
Height of cover:	15 mm
Locking:	unlocked
Load class:	L 15 (EN 1253-1)
Rim width:	300 mm
Rim length:	300 mm

Upper section material:
Mesh size:

Stainless steel 14301
23 x 23 mm