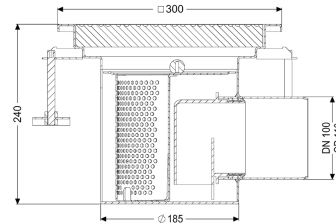
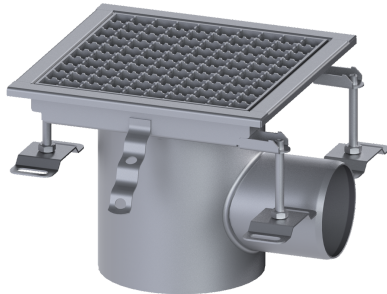


## Drain body Ferrofix, one-piece DN 100, hori., 300x300,grated cover L15



### Article information

Item no.: 55158  
 GTIN: 4026092107836  
 Price group: 70

### Advantages

- Made of particularly hygienic and mechanically highly resistant stainless steel

### Description

The one-piece Ferrofix System 185 stainless steel floor drain is used for point drainage and is equipped with a removable odour trap, sludge bucket and grated cover. The floor drain is suitable for thin-layered floorings (e.g. epoxy resin) and has an all-round adhesive rim. The outlet socket is suitable for connection to SML cast iron pipes. With a drainage capacity ■ 2.4 l/s with 20 mm build-up.

#### Variant

System:	185
Contents of sludge trap:	yes
Sealing water height:	70 mm
Discharge rate (l/s) with 20 mm threshold:	2,5
Outlet:	horizontal

#### General characteristics

Material:	Stainless steel 14301
Outlet:	horizontal
Odour trap:	included

#### Dimensions

Net weight:	5 kg
Gross weight:	5 kg
Length:	300 mm
Width:	300 mm
Height:	240 mm

Tank/drain body	
Number of outlets:	1
Outlet nominal size (DN):	100 mm
Coverage features	
Type of cover:	Slotted cover
Cover material:	Stainless steel 14301
Load class:	L 15 (EN 1253-1)
Grating material:	304 stainless steel
Shape of upper section:	square
Contents of sludge trap:	yes
Cover	
Grating material:	304 stainless steel