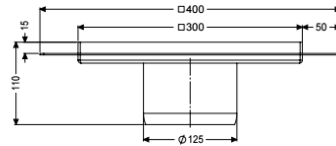
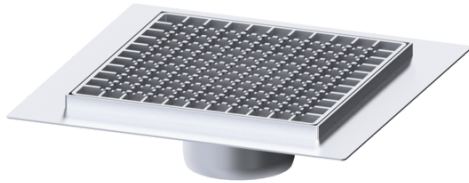


Ferrofix upper section glue flan. H: 15mm,300x300mm,slot grat.



Article information

Item no.: 54923
 GTIN: 4026092098653
 Price group: 70

Advantages

- Made of a particularly hygienic and mechanically highly resistant stainless steel
- Multiple combinations with suitable drain bodies

Description

Used in combination with a drain body of the KESSEL modular system 125, the stainless steel upper section is suitable for indoor point drainage. The upper section is suitable for thin-layered floorings (e.g. epoxy resin) and has a circumferential adhesive joint edge (15 mm deep and 50 mm folded outwards).

Variant

System:	125
Note on installation depth:	For load class M 125, on-site shimming necessary
Waterproofing layer on the upper section:	Adhesive flange (suitable for moisture barriers)
Water exposure class in accordance to DIN 18534-1 (up to and including):	W3-I

General characteristics

Standard:	EN 1253-1
ATEX:	no

Dimensions

Net weight:	7,95 kg
Gross weight:	8,86 kg
Length:	400 mm
Width:	400 mm
Height:	110 mm
Packaging dimension:	length
Packaging dimension:	width

Packaging dimension:	height
Coverage features	
Type of cover:	Slotted cover
Cover material:	Stainless steel 14301
Width of cover:	300 mm
Height of cover:	15 mm
Length of cover:	300 mm
Surface:	pickled
Locking:	placed
Load class:	L 15 / M 125 (EN 1253-1)
Shape of upper section:	square
Upper section material:	Stainless steel 14301
Mesh size:	23 x 23 mm