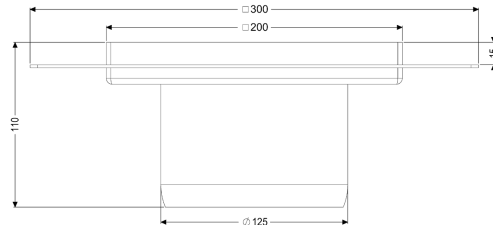
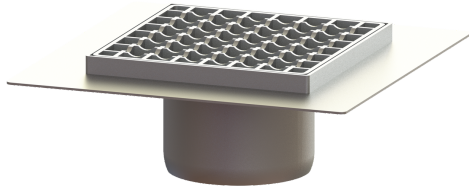


Ferrofix upper section Sys 125, Gl fl., slot grat., 200x200 mm



Article information

Item no.: 54917
 GTIN: 4026092072431
 Price group: 70

Advantages

- Made of a particularly hygienic and mechanically highly resistant stainless steel
- Multiple combinations with suitable drain bodies

Description

Used in combination with a drain body of the KESSEL modular system 125, the stainless steel upper section is suitable for indoor point drainage. The upper section is suitable for thin-layered floorings (e.g. epoxy resin) and has a circumferential adhesive joint edge (15 mm deep and 50 mm folded outwards). Including the "Easy Open" function in the odour trap in the upper section

Variant

System:

125

Note on installation depth:

For load class M 125, on-site shimming necessary

Waterproofing layer on the upper section:

Adhesive flange (suitable for moisture barriers)

General characteristics

Standard:

EN 1253-1

Dimensions

Net weight:

4,34 kg

Gross weight:

4,78 kg

Length:

300 mm

Width:

300 mm

Height:

100 mm

Packaging dimension:

length

Packaging dimension:

width

Packaging dimension:

height

Coverage features

Type of cover:	Slotted cover
Cover material:	Stainless steel 14301
Height of cover:	15 mm
Surface:	pickled
Locking:	unlocked
Load class:	L 15 / M 125 (EN 1253-1)
Rim width:	200 mm
Rim length:	200 mm
Shape of upper section:	square
Upper section material:	Stainless steel 14301
Mesh size:	23 x 23 mm