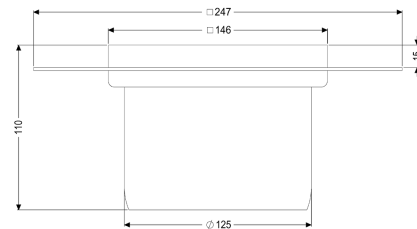
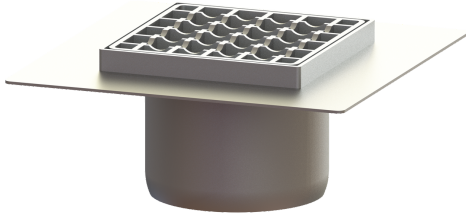


## Ferrofix upper section Sys 125, Gl fl., slot grat., 146x146 mm



### Article information

Item no.: 54915  
 GTIN: 4026092072462  
 Price group: 70

### Advantages

- Made of a particularly hygienic and mechanically highly resistant stainless steel
- Multiple combinations with suitable drain bodies

### Description

Used in combination with a drain body of the KESSEL modular system 125, the stainless steel upper section is suitable for indoor point drainage. The upper section is suitable for thin-layered floorings (e.g. epoxy resin) and has a circumferential adhesive joint edge (15 mm deep and 50 mm folded outwards).

#### Variant

System:	125
Note on installation depth:	For load class M 125, on-site shimming necessary
Waterproofing layer on the upper section:	Adhesive flange (suitable for moisture barriers)

#### General characteristics

ATEX:	no
-------	----

#### Dimensions

Net weight:	2,7 kg
Gross weight:	2,86 kg
Length:	246 mm
Width:	246 mm
Height:	100 mm
Packaging dimension:	length
Packaging dimension:	width
Packaging dimension:	height

#### Coverage features

Type of cover:	Slotted cover
Cover material:	Stainless steel 14301
Height of cover:	15 mm
Surface:	pickled
Locking:	unlocked
Load class:	L 15 / M 125 (EN 1253-1)
Rim width:	146 mm
Rim length:	146 mm
Shape of upper section:	square
Upper section material:	Stainless steel 14301
Mesh size:	23 x 23 mm