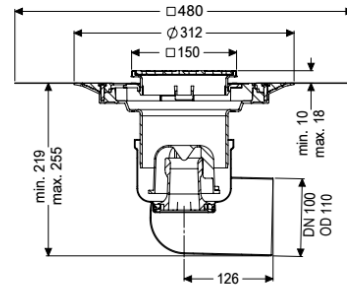
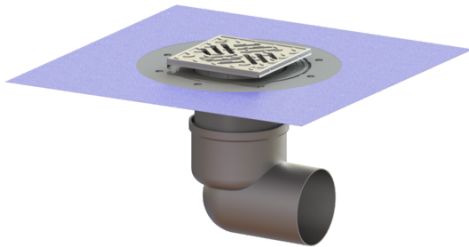


Ferrofix floor/roof drain DN 100, horiz., Waterpr layer, Slot grt



Article information

Item no.: 54420.52
 GTIN: 4026092056295
 Price group: 70

Advantages

- Made of particularly hygienic and mechanically highly resistant stainless steel
- High flow rate

Description

The Ferrofix stainless steel floor drain is used for point drainage and is equipped with a removable odour trap made of stainless steel, a lip seal and a temporary protective cover. The outlet socket is suitable for connection to SML cast iron pipes.

Variant

| | |
|---|---|
| System: | 125 |
| Waterproofing layer on the upper section: | Enclosed sealing collar to be glued (bd) according to DIN 18534 |
| Waterproofing layer on the drain body: | Connection flange |
| Sealing water height: | 50 mm |

General characteristics

| | |
|----------------------|-----------|
| Standard: | EN 1253-1 |
| Nominal size (DN): | 100 |
| Outer diameter (OD): | 110 mm |
| ATEX: | no |
| Odour trap: | included |

Dimensions

| | |
|-------------------------------|-------------------------------------|
| Vertical adjustment: | 10 - 18 mm |
| Net weight: | 3,8 kg |
| Gross weight: | 3,89 kg |
| Type of height adjustability: | vertically adjustable upper section |
| Length: | 196 mm |

| | |
|-------------------------|--|
| Width: | 142 mm |
| Packaging dimension: | length |
| Packaging dimension: | width |
| Packaging dimension: | height |
| Tank/drain body | |
| Number of outlets: | 1 |
| Material of drain body: | Stainless steel 14301 |
| Socket version: | lateral |
| Coverage features | |
| Type of cover: | Slotted cover |
| Cover material: | Stainless steel 14301 |
| Width of cover: | 138 mm |
| Length of cover: | 138 mm |
| Locking: | screwed |
| Load class: | L 15 (EN 1253-1) |
| Slip resistance class: | R11 according to DIN 51130; C according to DIN 51097 |
| Rim width: | 150 mm |
| Rim length: | 150 mm |
| Upper section: | adjustable in three dimensions |
| Upper section material: | ABS |