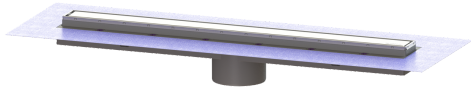


## Linearis Comfort upper section L: 850 mm, System 125, WaD, K 3



### Article information

Item no.: 48929M  
 GTIN: 4026092079058  
 Price group: 10

### Advantages

- Individual design with reversible stainless steel insert
- Highest fire protection standards
- Low installation depth

### Description

Used in combination with a drain body of the KESSEL 125 modular system, the Linearis Comfort upper section is suitable for use as indoor linear drainage.

#### Variant

System:	125
Seepage opening:	open
Waterproofing layer on the upper section:	Factory-fitted sealing collar (WaD) according to DIN 18534
Water exposure class in accordance to DIN 18534-1 (up to and including):	W3-I
Sealing water height:	50 mm
Discharge rate (l/s) with 10 mm backwater:	1,1
Discharge rate (l/s) without backwater:	1 mm

#### General characteristics

Nominal size (DN):	125
Outer diameter (OD):	125 mm
ATEX:	no
Odour trap:	included

#### Dimensions

Net weight:	3,63 kg
Gross weight:	4,36 kg
Outer dimension, length:	915 mm
Installation depth:	80 - 140 mm
Width:	243 mm
Height:	110 mm
Packaging dimension:	length
Packaging dimension:	width
Packaging dimension:	height

**Coverage features**

Type of cover:	Stainless steel cover
Cover material:	Stainless steel 14301
Colour of cover:	silver
Surface:	Brushed SST
Frame material:	Stainless steel 14301
Locking:	placed
Load class:	K 3 (EN 1253-1)
Grating design:	optionally tileable
Rim width:	66 mm
Rim length:	850 mm
Shape of upper section:	square
Upper section material:	ABS