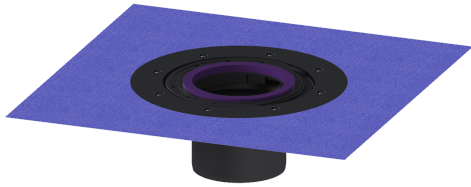


## Extension section H: 120 mm, with glued flange



### Article information

Item no.: 48900  
GTIN: 4026092034620  
Price group: 10

### Description

Extension section with glued flange for alternative seals, side adjustable for adapting to the tiling pattern, including temporary protective cover

#### Variant

Seal: Lip seal

#### General characteristics

Colour: grey  
Material: ABS  
ATEX: no

#### Dimensions

Net weight: 1,09 kg  
Gross weight: 1,36 kg  
Diameter: 312 mm  
Clear width (LW): 125 mm  
Packaging dimension: length  
Packaging dimension: width  
Packaging dimension: height