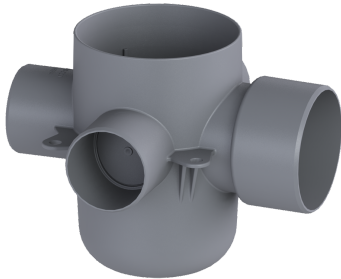


## Bathroom drain body ME with 3 horizontal inlets OD 55 mm



### Article information

Item no.: 373001  
 GTIN: 4026092048580  
 Price group: 10

### Advantages

- for glued bonds
- Connections according to BS5255
- optional for DIN1253

### Description

The drain body for ME bathroom drains is made of polymer and is equipped with a removable odour trap. It has three optional inlets and one outlet to British standard.

#### Variant

Waterproofing layer on the drain body:	Connection flange
Sealing water height:	75 mm
Discharge rate (l/s) with 20 mm threshold:	1,8

#### General characteristics

Outer diameter (OD):	55 mm
Odour trap:	included

#### Dimensions

Net weight:	0,2 kg
Gross weight:	0,2 kg
Length:	219 mm
Width:	200 mm
Height:	168 mm
Packaging dimension:	length
Packaging dimension:	width
Packaging dimension:	height

#### Tank/drain body

Inlet nominal size (OD):	55 mm
Number of inlets:	3
Material of drain body:	ABS
Socket version:	lateral