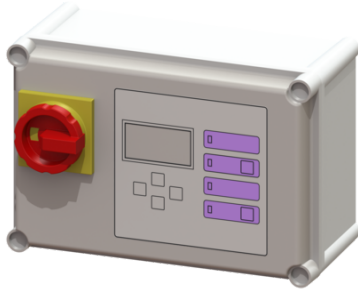


## Comfort control unit 400V, Aqualift Mono, 2.5-4.0 A, ATEX



### Article information

Item no.: 28759  
GTIN: 4026092054598  
Price group: 20

### Advantages

- Self-diagnosis system (SDS)
- Potential-free contact for faults/warnings
- Reminder for when maintenance is due

### Description

Comfort control unit suitable for 400V single stations with submersible pumps with ATEX approval. User-friendly menu navigation in multi-line display. With self-diagnosis system (SDS) and reminder when maintenance is due. Display of the current measured values. Easy setting of the function-relevant parameters, operating hours counter. Optional forwarding of alarm and collective fault messages via GSM interface.

Variant	
Series:	ab 03/2010
Type of system:	Single unit
General characteristics	
Colour:	grey
System type:	Mono
Dimensions	
Net weight:	2,47 kg
Gross weight:	3,19 kg
Packaging dimension:	length
Packaging dimension:	width
Packaging dimension:	height
Pumping device	
Connection type:	Direct connection
Rated current:	2,5 - 4 A
Control	
Control unit:	Comfort
Motor protection switch:	yes
Protection class control unit:	IP 54
Connection type:	Direct connection

Potential-free contact:	yes
GSM interface:	yes
USB interface:	no
Log book function:	yes
Multi-line display:	yes
Battery buffering:	yes
Self-diagnosis system (SDS):	yes
Rated current:	2,5 - 4 A