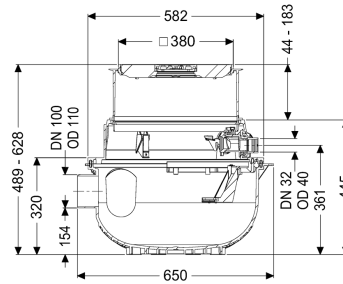


Shell Kit for Aqualift S Compact blac. GTF500 Mono



Article information

Item no.: 280500S-RBK

GTIN: 4026092106907

Price group: 20

Description

For combination with a KESSEL technology kit for creating a Mono lifting station for wastewater without sewage with a GTF500 wastewater pump.

The ready to plug in lifting station for wastewater without sewage is equipped with a submersible pump and a backflow preventer. The collection tank made of permanently resistant polymer (PE) has an open pump tank. One-handed closures enable easy removal of the integrated components. The system for installation in the floor slab is pre-assembled for final installation on site.

KESSEL shell kit consisting of:

- With vertically adjustable upper section for continuous height and level compensation and integrated floor drain
- PE collection tank, resistant to aggressive wastewater and 3 m groundwater
- Includes backflow preventer for the pressure pipe
- Includes connection socket for inlet and conduit pipe

Variant

Type of system:	Single unit
Pump control:	Float switch
Backflow preventer:	integrated

General characteristics

Colour:	black
Standard:	EN 12050-2

Type of wastewater:	without sewage
Installation situation:	floor slab installation
Delivery state:	Installation-ready (connection parts must be connected on site)
ATEX:	no
Dimensions	
Net weight:	21 kg
Gross weight:	21 kg
Groundwater resistant from lower edge of base section:	3000 mm
Installation depth:	490 - 620 mm
Type of height adjustability:	vertically adjustable upper section
Length:	617 mm
Width:	585 mm
Packaging dimension:	length
Packaging dimension:	width
Packaging dimension:	height
Tank/drain body	
Pressure pipe connection (DN):	32
Pressure pipe connection (OD):	40 mm
Inlet nominal size (DN):	100 mm
Pumping volume:	16 l
Tank volume:	65 l
Coverage features	
Type of cover:	Cover plate with slotted cover
Cover material:	Polymer
Colour of cover:	black
Width of cover:	366 mm
Length of cover:	366 mm
Drainage function:	yes
Locking:	Lock & Lift
Load class:	K 3 (EN 1253-1)
Max. flooring height:	16 mm
Pumping device	
Pump:	GTF 500
Number of pumps:	1
Max. pumping height:	8 m