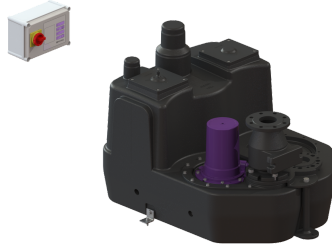


## Aqualift F XL, 200 L lift. stat. Mono, SPF 5500-S3



### Article information

Item no.: 11072  
 GTIN: 4026092057391  
 Price group: 50

### Advantages

- Different performance classes available
- Pressure sensor for reliable pneumatic level measurement
- Maximum operating reliability due to intelligent control unit (Duo)

### Description

The lifting station for faecal and faecal-free wastewater is equipped with one or two submersible pumps and a backflow preventer. The collection tank made of permanently resistant polymer (PE) offers universal connection options and has a screwed access cover.

#### Variant

|                           |                        |
|---------------------------|------------------------|
| Type of system:           | Single unit            |
| Shut-off valve:           | without shut-off valve |
| Backflow preventer:       | integrated             |
| Pressure pipe connection: | vertical               |

#### General characteristics

|                         |                            |
|-------------------------|----------------------------|
| Colour:                 | black                      |
| Standard:               | EN 12050-1                 |
| Type of wastewater:     | with sewage                |
| Installation situation: | free-standing installation |
| System type:            | Mono                       |

#### Dimensions

|                      |           |
|----------------------|-----------|
| Net weight:          | 117,29 kg |
| Gross weight:        | 137,29 kg |
| Packaging dimension: | length    |
| Packaging dimension: | width     |
| Packaging dimension: | height    |

#### Tank/drain body

|              |       |
|--------------|-------|
| Tank volume: | 200 l |
|--------------|-------|

#### Pumping device

|                                 |                     |
|---------------------------------|---------------------|
| Pump:                           | SPF 5500            |
| Number of pumps:                | 1                   |
| Operating mode:                 | S3 - 30 %           |
| Impeller type:                  | Multi-vane impeller |
| Free passage:                   | 40 mm               |
| Length of mains cable for pump: | 5 m                 |
| Control                         |                     |
| Control unit:                   | Comfort             |
| Level measurement instrument:   | Immersion pipe      |
| Type of level measurement:      | pneumatic           |
| Mains frequency:                | 50 Hz               |
| Operating voltage:              | 400 V               |