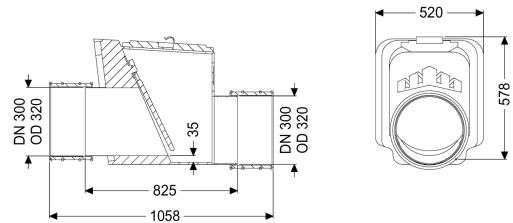
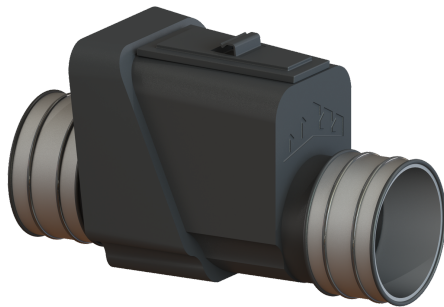


Backwater valve Multitube DN 300, 1 flap



Article information

Item no.: 71300
GTIN: 4026092011614
Price group: 10

Advantages

- Inlet and outlet with pipe clamp
- Bridgeable outer diameter at least nominal width + 20 mm
- Simple maintenance and cleaning

Description

The backwater valve for rainwater is equipped with a mechanical flap which closes automatically in the event of backwater.

Variant

Mechanical backwater flaps: 1

General characteristics

Colour:	black
Nominal size (DN):	300
Outer diameter (OD):	316 mm
Note on nominal size:	Bridgeable outer diameter of pipe clamps
Type of wastewater:	without sewage
Installation situation:	underground installation
Delivery state:	installation-ready

Dimensions

Net weight:	25 kg
Gross weight:	25 kg
Vertical drop between inlet and outlet:	52 mm
Length:	735 mm
Width:	525 mm
Height:	572 mm
Packaging dimension:	length
Packaging dimension:	width

Packaging dimension:	height
Coverage features	
Cover locking:	screwed