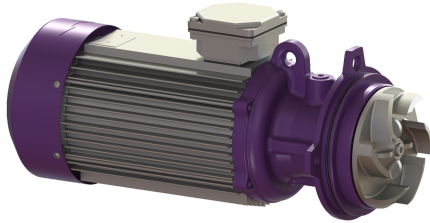


Geared motor for SPF 300 KE, IP 55



Article information

Item no.: 680916
GTIN: 4026092092316
Price group: 90

Description

Geared motor suitable for pump SPF 300 KE

General characteristics

Type de protection moteur: IP 55

Dimensions

Net weight: 25,5 kg

Gross weight: 26,5 kg

Packaging dimension: length

Packaging dimension: width

Packaging dimension: height

Pumping device

Power P2: 3 kW

Control

Mains frequency: 50 Hz

Operating voltage: 400 V