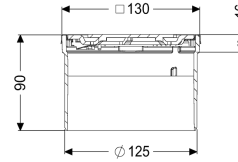
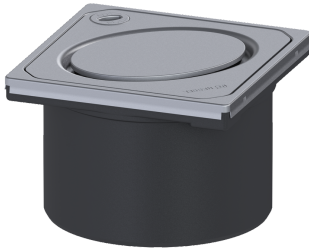


Upper section Oval des cov, 304 SST, Lock&Lift, L 15



Article information

Item no.: 48202
 GTIN: 4026092028759
 Price group: 10

Advantages

- Multiple combinations with suitable drain bodies

Description

Used in combination with a drain body of the KESSEL modular system, the upper section is suitable for indoor point drainage.

Variant

System: 125

Dimensions

Net weight: 0,72 kg

Gross weight: 0,72 kg

Height: 90 mm

Packaging dimension: length

Packaging dimension: width

Packaging dimension: height

Coverage features

Type of cover: Design cover

Cover material: Stainless steel 14301

Colour of cover: silver

Height of cover: 16 mm

Surface: ground

Frame material: Stainless steel 14301

Locking: Lock & Lift

Load class: L 15 (EN 1253-1)

Grating design: Oval

Rim width: 132 mm

Rim length:	132 mm
Shape of upper section:	square
Upper section material:	ABS